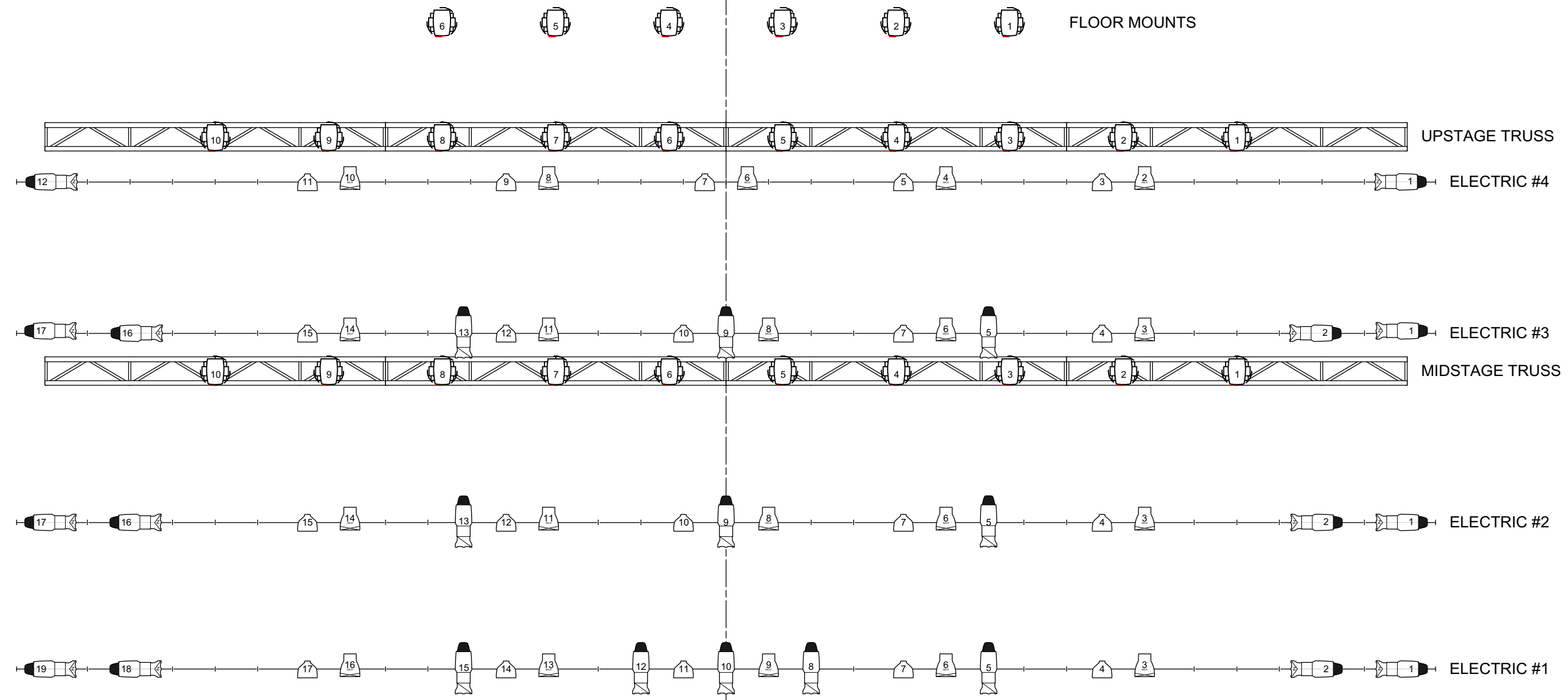
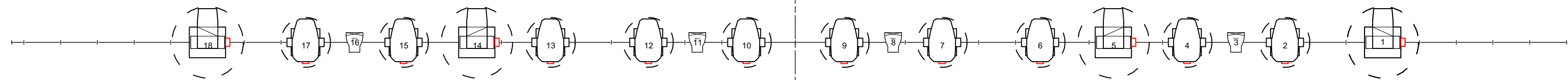
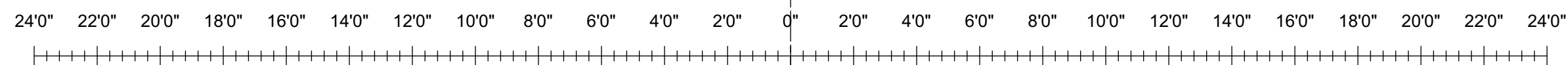
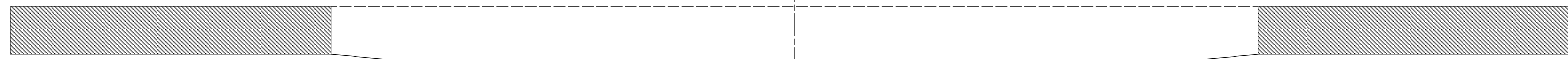


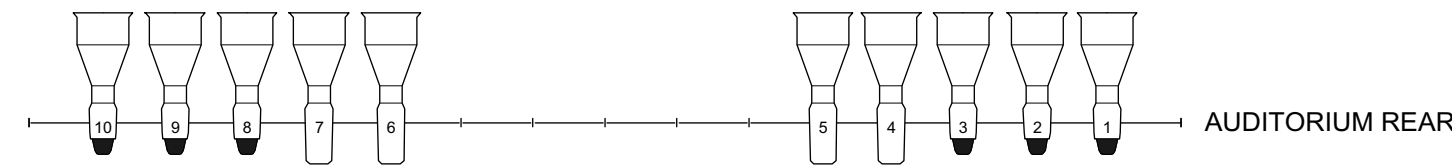
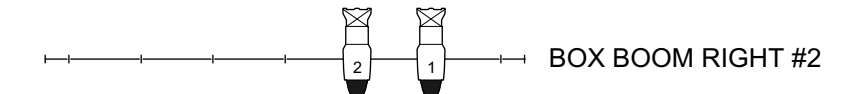
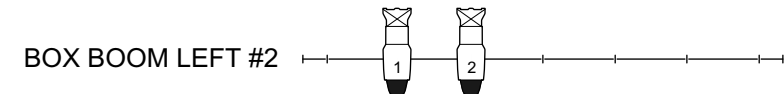
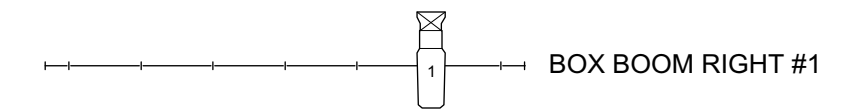
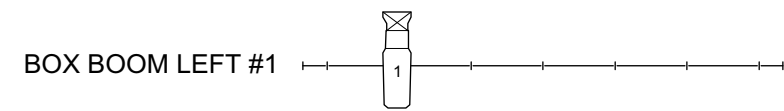
LINE	DIST FR PL	PURPOSE
17	28'-6"	BLACK TRAVELER
16	27'-4"	SPARE
15	26'-0"	SPARE
14	25'-4"	SPARE
13	24'-4"	BORDER #4
12	21'-8"	SPARE/ELECTRIC #4
11	19'-8"	LEGS #2
10	19'-0"	BORDER #3
9	16'-4"	SPARE/ELECTRIC #3
8	13'-8"	MIDSTAGE TRAVELER
7	13'-0"	BORDER #2
6	9'-8"	ELECTRIC #2
5	7'-8"	LEGS #1
4	7'-0"	BORDER #1
3	4'-6"	ELECTRIC #1
2	3'-0"	PROJECTION SCREEN
1	2'-4"	PROJ SCREEN LEGS
A	1'-8"	MAIN ACT CURTAIN
T	1'-0"	MAIN TEASER



KEY TO INSTRUMENTATION	
	ETC Selador D40 Vivid (24)
	Elation Smarty Hybrid (26)
	Elation Artiste DaVinci (10)
	Varilite VL2500 Spot (2)
	Varilite VL2500 Wash (2)
	ETC Source 4 PAR MFL (20)
	ETC Source 4 Zoom 25/50 (14)
	ETC Source 4 26 degree (9)
	ETC Source 4 19 degree (4)
	ETC Source 4 5 degree (6)
	ETC Source 4 Lustr 19 deg (2)
	ETC Source 4 Lustr 5 deg (4)



FRONT OF HOUSE TRUSS
30' FROM PLASTER LINE
36 CIRCUITS AND 2 UNIVERSES AVAILABLE
CANNOT BE REACHED FOR FOCUS



HOUSE LIGHTING PLAN
1/4" = 1' - 0"
JUNE 2019

CAPITOL THEATRE FLINT, MICHIGAN